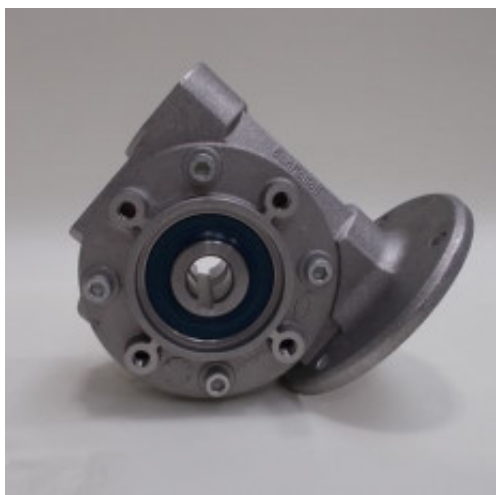


## AE-021 - Gearbox



**Spare Part Number:** AE-021

**Net Weight:** 0.00kg

**Net Dimensions:** 0.00cm x 0.00cm x 0.00cm

### Description

## AE-021 Gearbox

Mechanical component consisting of a series of integrated gears within a housing with the scope of altering torque and speed between the driving device (the motor) and a load.

### Equipment reference

Classic 3 P

EVO 3 IP

EASY TO PLATE EVO 3 IPD

EASY TO PLATE EVO 3 IPI

EVO 4 IP

EASY TO PLATE EVO 4 IPD

EASY TO PLATE EVO 4 IPI

EVO 5 IP

EASY TO PLATE EVO 5 IPD

EASY TO PLATE EVO 5 IPI

EVO 5 BP **Ref. M6**

EASY TO PLATE EVO 5 BPD **Ref. M6**

EASY TO PLATE EVO 5 BPI **Ref. M6**

620 for **M10**

621 for **M10**

830 for **M10**

### **Catalogues/Families**

Suitable for the following equipment models:	
CLASSIC 3 P	
CLASSIC 4 P	
EASY TO PLATE EVO 3 IPD	
EASY TO PLATE EVO 3 IPI	
EASY TO PLATE EVO 4 IPD	
EASY TO PLATE EVO 4 IPI	
EASY TO PLATE EVO 5 BPD	
EASY TO PLATE EVO 5 BPI	
EASY TO PLATE EVO 5 IPD	
EASY TO PLATE EVO 5 IPI	
EVO 3 IP	
EVO 4 IP	
EVO 5 BP	

EVO 5 IP	
Spare Part Type	
Mechanical Component	
Spare Part Group	
Others	
Stock Type	
Standard Stock	